

# Where to stay

## Chifley Penrith Panthers Where you want to be!



For a lingering long weekend, a sneaky mid-week break or a quick getaway, stay at the Chifley Penrith Panthers. Nestled in the foothills of the picturesque Blue Mountains and just 55 minutes West of Sydney, the Chifley is the place to relax and be entertained.

- 221 Guest Rooms
- Swimming Pool
- Gymnasium
- Family BBQ Area



- Chifley Lounge
- 24 Hr Reception
- Complimentary car parking



For Enquiries Call 02 4721 7700

Visit [www.chifleyhotels.com/penrith](http://www.chifleyhotels.com/penrith)



Cnr Mulgoa & Jamison Roads, Penrith NSW 2750



## Escape to Nepean Shores...

### Accommodation to make you feel at home

Nestled on the banks of the Nepean River, our spacious Australian-style cottages are fully self-contained and serviced daily. Swimming pool, tennis court and BBQ area are all provided for your convenience and conference facilities are also available.

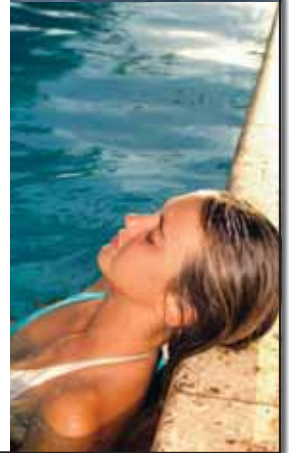


6-22 Tench Ave, Penrith NSW 2750

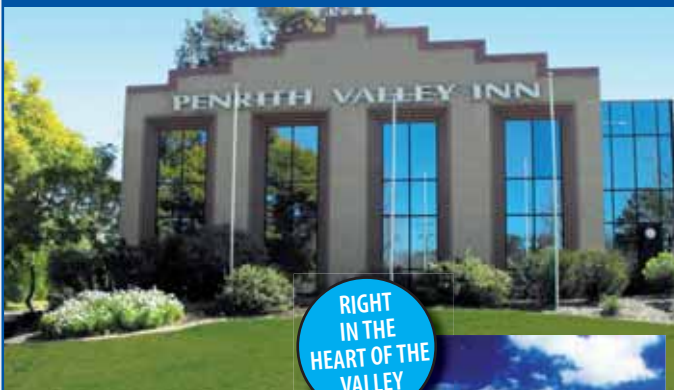
Phone: (02) 4720 8100

Fax: (02) 4720 8115

Email: [nsreservations@panthers.com.au](mailto:nsreservations@panthers.com.au)



## QUALITY ACCOMMODATION AT AN AFFORDABLE PRICE



RIGHT  
IN THE  
HEART OF THE  
VALLEY

Rooms to suit couples, families and groups. All are tastefully furnished to make your stay as relaxing and comfortable as possible.

- 39, 3.5 AAA rated rooms
- Special Coach and Sporting Rates
- A selection of function & meeting rooms
- Off street & undercover parking
- Outdoor pool



Cnr. Great Western Hwy & Memorial Ave. Penrith  
Tel: (02) 4731 1666 Fax: (02) 4721 0321  
Email [enquiries@valleyinn.com.au](mailto:enquiries@valleyinn.com.au)

[www.valleyinn.com.au](http://www.valleyinn.com.au)



## Nepean River Holiday Village



Nepean River Holiday Village is situated at the foot of the Blue Mountains and is ideally located within minutes of the M4 motorway and train station.

Situated on the shores of the Nepean River, the Village offers a choice of air-conditioned accommodation and new **Function Centre**. Our 4 Star Villas sleep six and are fully self contained and the **Ensuite Cabins** provide comfortable accommodation for five. The **Motel** rooms are ideal for couples or corporate accommodation and have a community kitchen. Two new **Group Cottages** each sleep up to 12. The powered caravan sites and camping sites are set in pleasant landscaped gardens with ample shade. There are a full range of facilities including BBQ, modern amenities, camp kitchen, beautiful in ground pool, kiosk, games room and laundrette for the use of all Village guests.



Reservations 1300 851 820

Mackellar Street

Emu Plains 2750

Ph 024735 4425

Fax 4735 6301

Email [nepeanriver@holidayvillages.com.au](mailto:nepeanriver@holidayvillages.com.au)

[www.holidayvillages.com.au](http://www.holidayvillages.com.au)



# Where to stay

## Castlereagh Penrith Lakes Academy

1727 Old Castlereagh Rd Castlereagh  
9629 5756

[www.castlereaghacademy.net.au](http://www.castlereaghacademy.net.au)

## Cables Wake Park Backpacker Panthers

Leagues Club Mulgoa Road 47 CABLES  
[www.cableswakepark.com.au](http://www.cableswakepark.com.au)

## Cabrera Cottage

11 Jipp St Penrith

0414 767 312

[iacasacabrera18@hotmail.com](mailto:iacasacabrera18@hotmail.com)

## Chifley Penrith Panthers

Mulgoa Road Penrith 1300 650 464

[www.chifleyhotels.com.au/Penrith](http://www.chifleyhotels.com.au/Penrith)

## Log Cabin Motor Inn

Memorial Avenue Penrith 4732 3122

[www.logcabin.com.au](http://www.logcabin.com.au)

## Nepean River Holiday Village

Mackellar Street Emu Plains 4735 4425

[www.nepeanriver.holidayvillages.com.au](http://www.nepeanriver.holidayvillages.com.au)

## Nepean Shores Riverside Resort

6-22 Tench Avenue Penrith 4720 8100

[www.nepeanresort.com.au](http://www.nepeanresort.com.au)

## Penrith Valley Inn

Memorial Ave Penrith 4731 1666

[www.valleyinn.com.au](http://www.valleyinn.com.au)

## Waterview Apartment 1

86 River Road Leonay 4735 8692

[www.penrithservicedaccommodation.com.au](http://www.penrithservicedaccommodation.com.au)



For more information  
phone Penrith Valley  
Visitor Information  
Centre 1300 736 836



## Treat your group to the ultimate Penrith Valley experience...

A comprehensive guide to group activities and facilities in Penrith Valley.

**FREE TOUR  
IDEAS KIT PHONE  
1300 736 836**



**PENRITH VALLEY**  
River Mountains Lakes



### Penrith Valley Visitor Information Centre

Panthers Car Park Mulgoa Road Penrith  
Open 7 days 9am to 4.30pm

(Closed Christmas Day and Good Friday)

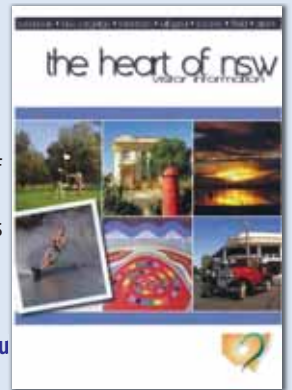
Email: [pentour@penrithcity.nsw.gov.au](mailto:pentour@penrithcity.nsw.gov.au)

Web: [www.penrithvalley.com.au](http://www.penrithvalley.com.au)

## Come and visit our friends in the heart of NSW!

Penrith has developed a friendship agreement with the Lachlan Shire in the rural heartland of New South Wales. Find out what you can do and more about the relaxed and friendly towns of Condbolin, Lake Cargelligo and Tottenham. Pick up a 'Heart of NSW Guide' at the Penrith Valley Visitor Information Centre.

For further info visit [www.heartofnsw.com.au](http://www.heartofnsw.com.au) or phone 02 6895 3301



## For everything you need to know about your visit to Penrith Valley, go to...

**[www.penrithvalley.com.au](http://www.penrithvalley.com.au)**

- How to get to Penrith Valley.
  - Where to stay, play and eat.
  - Great ideas for things to see and do.
  - Penrith Valley Tour Ideas.
  - Disability services and facilities.
- And lots more, pictures, facts and information...  
[www.penrithvalley.com.au](http://www.penrithvalley.com.au)  
The Official Tourism Website of Penrith Valley



# Where to stay



accommodation



### CABRERA COTTAGE - PENRITH

11 Jipp Street Penrith  
Phone: 0414 767 312

Email: [lacasacabrera18@hotmail.com](mailto:lacasacabrera18@hotmail.com)

Lovely 3 bedroom, non smoking, pet friendly, fully self contained guest cottage, newly refurbished, accommodating up to 6 people with 2 queen beds and 2 singles.

Located in quiet street yet close to all Penrith's major attractions.

Where to stay



### PENRITH VALLEY VISITOR INFORMATION CENTRE

1300 736 836 or go to [www.penrithvalley.com.au](http://www.penrithvalley.com.au)

Panthers carpark, Mulgoa Rd  
Open 9am- 4:30pm everyday  
(exc. Christmas Day and Good Friday)

## Castlereagh Penrith Lakes Academy

Located in a tranquil setting overlooking the International Regatta Centre (Penrith).

- Accommodation for 48 in 6 Cabins. 1 with disabled access.

- Each cabin accommodates 8. 2 ensuite and living room. A/C

- Linen supplied. Laundry facilities.
- Fully equipped kitchen & BBQ.

Catering on request.

- Chapel hire for weddings and baptisms.

- Conference hall accommodates 120.



297-305 Old Castlereagh Road, Castlereagh 2749  
Ph/Fax (02) 47 290012 A/h 0417 959624  
Email: [academyacc@bigpond.com](mailto:academyacc@bigpond.com)  
[www.castlereaghacademy.net.au](http://www.castlereaghacademy.net.au)

## WATERVIEW APARTMENT OVERLOOKING THE NEPEAN RIVER

Large self-contained executive style two bedroom apartment.  
Situated on the bank of the magnificent Nepean River.  
Nestled at the foothills of the Blue Mountains in a quiet, peaceful bush setting.

Phone or email for a brochure and information.

Waterview Apartment 186 River Road LEONAY 2750

P. 4735 8692 M. 0403 195225 E. [lavourmie@optusnet.com.au](mailto:lavourmie@optusnet.com.au)

Enquiries and online bookings at [www.penrithservicedaccommodation.com.au](http://www.penrithservicedaccommodation.com.au)

## Log Cabin



Location • Comfort • Style

## Log Cabin

MEMORIAL AVE. PENRITH

Tel 02 4732 3122



- Function Rooms Catering for 10 to 300

- LIVE Entertainment every Friday & Sunday

- Coaches & Sporting Groups our Specialty

- The Regatta Bar & Bistro. Open 7 Days

- The Nepean Waterside Restaurant

- 39 Three - Three & A Half Star AAA Rated Rooms



Email enquiries@[logcabin.com.au](http://logcabin.com.au) Web [www.logcabin.com.au](http://www.logcabin.com.au)